

NON-STRUCTURAL BMP'S:

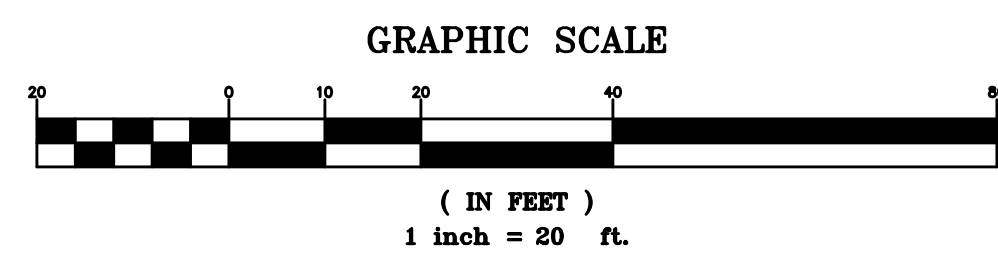
- ① N3 - COMMON AREA LANDSCAPE MANAGEMENT
- ② N14 - COMMON AREA CATCH BASIN INSPECTION
- ③ N11 - COMMON AREA LITTER CONTROL
- ④ N15 - STREET SWEEPING OF PUBLIC STREETS & PARKING LOTS

STRUCTURAL BMP'S:

- ① S1 - PROVIDE STORM DRAIN STENCILING & SIGNAGE
- ② S2 - DESIGN AND CONSTRUCT OUTDOOR MATERIAL STORAGE AREAS TO REDUCE POLLUTION INTRODUCTION
- ③ S3 - DESIGN AND CONSTRUCT TRASH AND WASTE STORAGE AREAS TO REDUCE POLLUTION
- ④ S4 - USE EFFICIENT IRRIGATION SYSTEMS AND LANDSCAPE DESIGN, WATER CONSERVATION, SMART CONTROLLERS, AND SOURCE CONTROL
- ⑤ S9 - OUTDOOR PROCESSING AREAS
- ⑥ S10 - EQUIPMENT WASH AREAS

LEGEND:

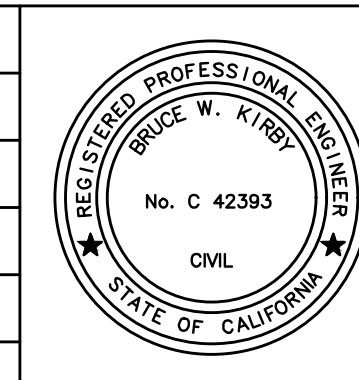
- DMA BOUNDARY
- PROPERTY LINE
- CMU SCREEN WALL
- STORM DRAIN PIPING
- FLOW ARROWS
- CONCRETE PAVEMENT
- LANDSCAPING
- DRAINAGE SUB-AREA LABEL
DRAINAGE SUB-AREA SIZE (ACRES)
- 12X12 STORM DRAIN INLET



BASIS OF BEARINGS:
 THE BASIS OF BEARINGS FOR THIS SURVEY IS THE CALIFORNIA COORDINATE SYSTEM, CCS83, ZONE VI, 2017.50 DATUM ADJUSTMENT. GPS DERIVED BETWEEN OCS POINTS 6093R1 AND 6183R1.

BENCHMARK:
 Designation: 1E-116-99
 FOUND 3 3/4" OCS ALUMINUM BENCHMARK DISK STAMPED "1E-116-99". SET IN THE NORTHWEST CORNER OF A 5.0 FT. BY 5.0 FT. CONCRETE CATCH BASIN. MONUMENT IS LOCATED ALONG THE WESTERLY SIDE OF PALM STREET, 110 FT. NORTHERLY OF THE CENTERLINE OF BAY AVENUE AND 21 FT. WEST OF THE CENTERLINE OF PALM STREET. MONUMENT IS SET LEVEL WITH THE SIDEWALK. ELEVATION = 7.587 FEET, NAVD88, LEVELED 2015.

NO.	DATE	DESCRIPTION OF REVISIONS



REVIEWED:	BRUCE KIRBY, RCE 42393 SENIOR PROJECT MANAGER
DESIGNED: XX	DRAWN: CC
CHECKED: XX	DATE: 10/16/19

WQMP SITE PLAN
 JUNIOR LIFEGUARD BUILDING PROJECT

CITY OF NEWPORT BEACH
 PUBLIC WORKS DEPARTMENT

X-XXXX-X
 SHEET 1 OF 1

C-XXXX